

# LRC 样品测试说明及结果

1 · 测试坐标原点（虚拟焦点  $x = -0.002\text{mm}$ ,  $y = 0.026\text{mm}$ ,  $z = -0.118\text{mm}$ ）

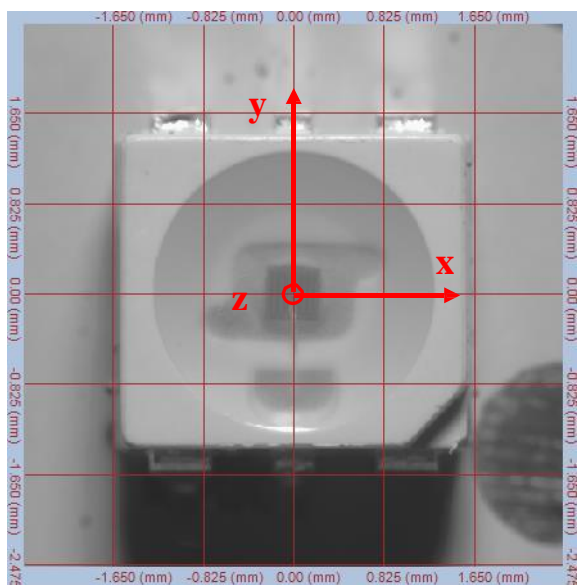


图 1  $I=0^\circ, A=0^\circ$

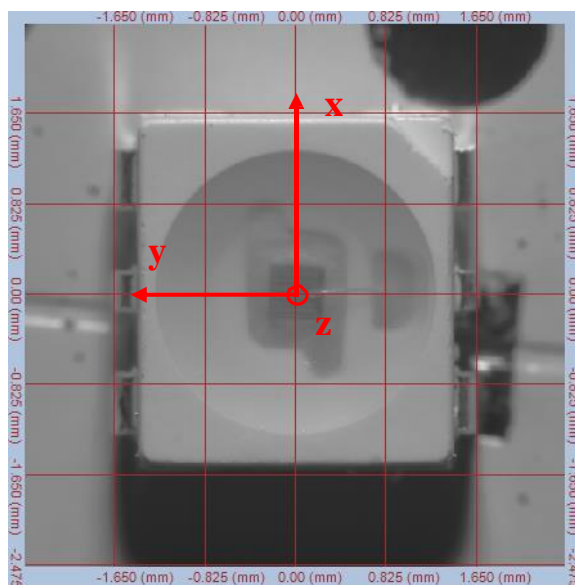


图 2  $I=0^\circ, A=90^\circ$

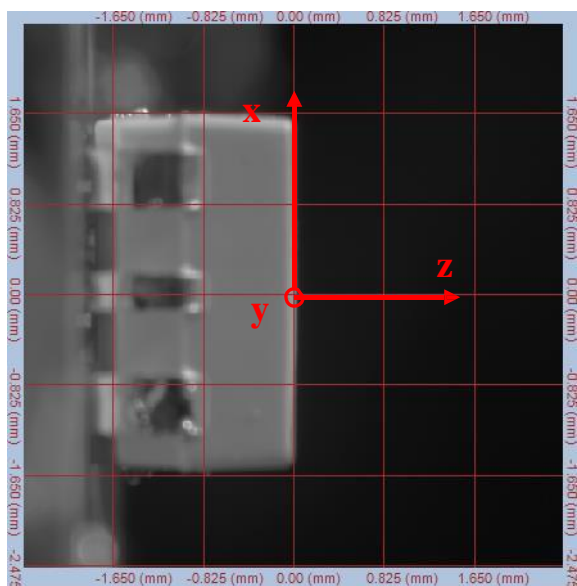


图 3  $I=90^\circ, A=90^\circ$

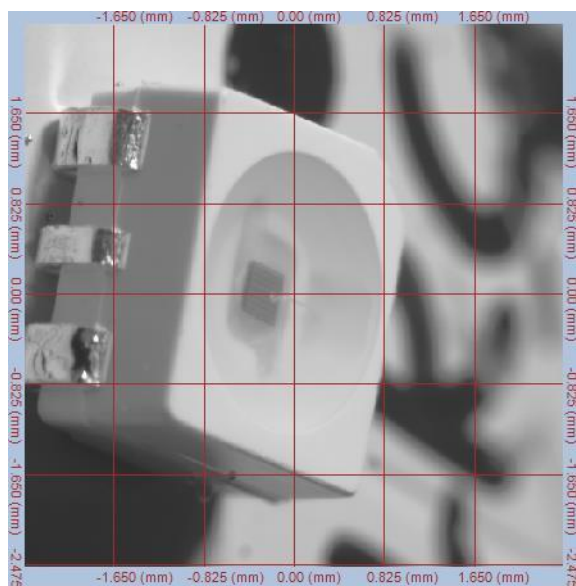


图 4  $I=50^\circ, A=75^\circ$

\*\*\*\*\*报告结束\*\*\*\*\*